



April 2026



Welcome Keith!

The Brien Center has appointed [Keith Kendall](#) as Interim President and Chief Executive Officer, effective immediately.

Kendall is a seasoned executive with more than two decades of leadership experience as a CEO, COO, and CFO across healthcare, life sciences, and financial services organizations. He brings extensive expertise in organizational leadership, operations, and governance within complex, highly regulated environments.

In this interim role, he will focus on listening and engaging across the organization, reviewing current operations, and supporting long-term sustainability while continuing to ensure high-quality care for individuals and families across Berkshire County.

Please join us in welcoming Keith to The Brien Center. We are excited to have him on board and value the expertise he brings to our organization.

In the Community



The Brien Center was proud to spend the day connecting with families at the Berkshire Baby Bonanza, a free, county-wide baby shower supporting new and expecting parents across our community. Our team enjoyed meeting

caregivers, sharing resources, and highlighting the importance of early access to mental health and family support services. Events like this are a wonderful reminder of the strength of community and the impact of coming together to support healthy beginnings for children and families throughout Berkshire County.



How the Brien Center Can Help

April is Alcohol Awareness Month, a time to increase understanding of how alcohol use can impact individuals, families, and communities, while also highlighting the importance of support and recovery.

At The Brien Center, we recognize that alcohol use looks different for everyone. For some, it may be occasional or social. For others, it may become a way of coping with stress, anxiety, or life challenges. Over time, alcohol use can affect mental health, relationships, physical health, and overall well-being.

The Brien Center provides compassionate, nonjudgmental care for individuals at all stages of their relationship with alcohol. Our services include comprehensive assessment, outpatient counseling, and integrated treatment that addresses both mental health and substance use together.

We also support families and loved ones, understanding that recovery and behavior change impact entire support systems. Whether someone is looking to reduce use, better understand their patterns, or take steps toward recovery, our team is here to meet them where they are.

Reaching out for support does not require a crisis. Early connection to care can make a meaningful difference.

Did You Know?

Alcohol can impact mental health more than many people realize. While it may feel like it reduces stress in the moment, alcohol is a depressant that can increase anxiety, worsen mood, and interfere with sleep over time.

Many people also do not realize that support is available at any stage of change, not just in crisis or during recovery. Exploring your relationship with alcohol is a valid and important first step.

Get Support

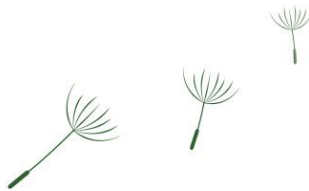
If you or someone you know is looking for support, the Brien Center is here to help. Contact us at: 413.499.0412 to learn more about services or get connected with care.



We're Hiring

Apply Today: [Brien Center for Mental Health Career Opportunities](#)

*We celebrate diversity and welcome applicants
of all backgrounds and identities.*



Need Support? We're Here.

If you or someone you care about is struggling, don't wait. Call us. We offer a full continuum of care for mental health and substance use recovery — from crisis intervention to outpatient therapy and beyond.

Learn more or connect with us:

www.briencenter.org

Scheduling: 413.499.0412

24/7 Crisis Hotline: 800-252-0227

We are here to help.

The Brien Center Team

"It's comforting to know there are organizations like The Brien Center that prioritize both parent and child well-being from the very beginning."

- Brien Center Client

Donate Today



Keep in touch!

Visit our Website



The Brien Center | PO Box 4219 359 Fenn St. |
Pittsfield , MA 01202-0412 US

[Unsubscribe](#) | [Update Profile](#) | [Constant Contact](#)
[Data Notice](#)



Try email marketing for free today!